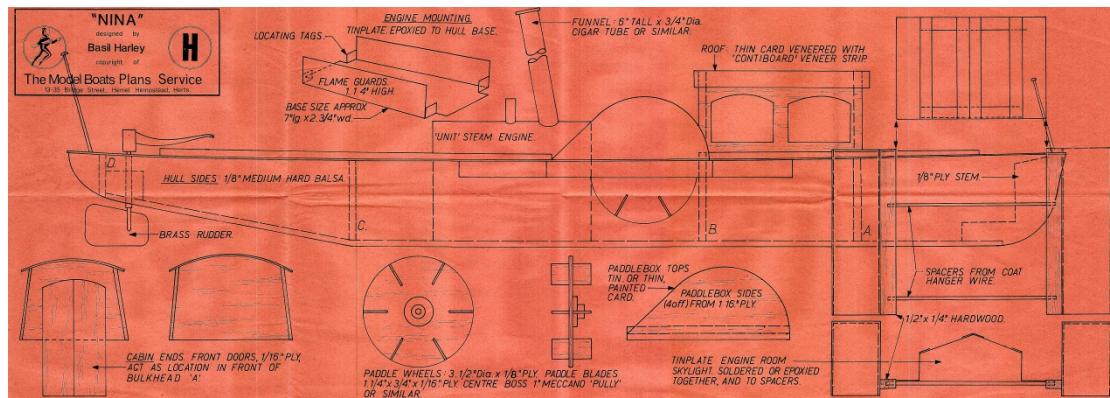


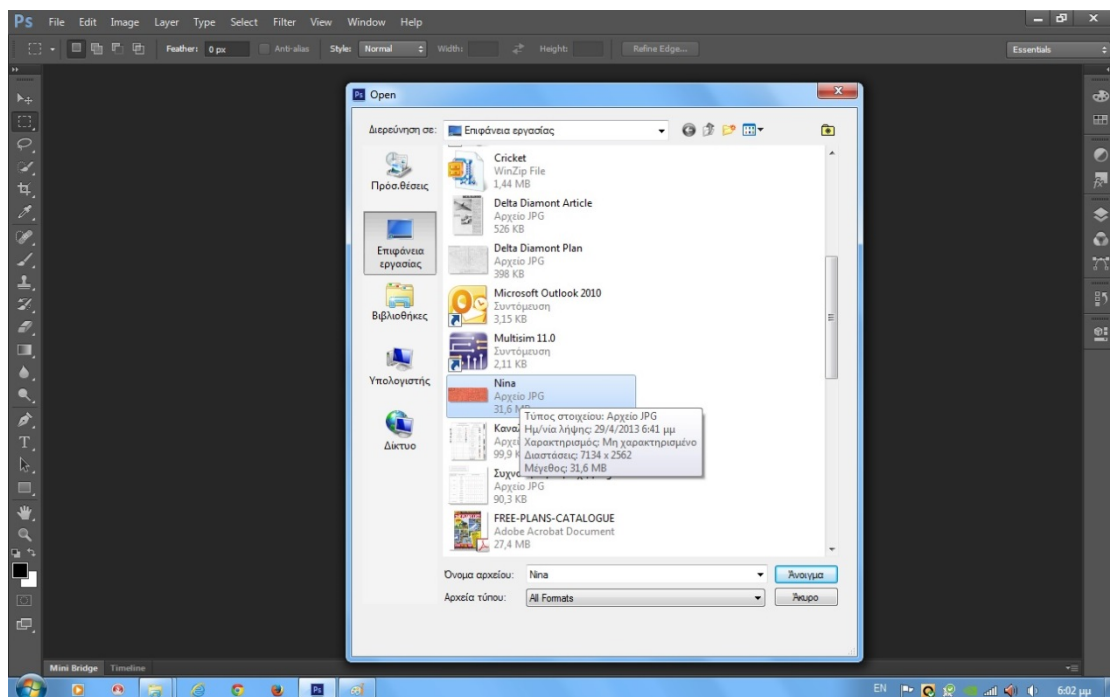
How abstract ( Remove ) a difficult color from the plan.

Step 1.

Photoshop opens, and loads the file Jpeg with the plan Nina before inside photo 1.

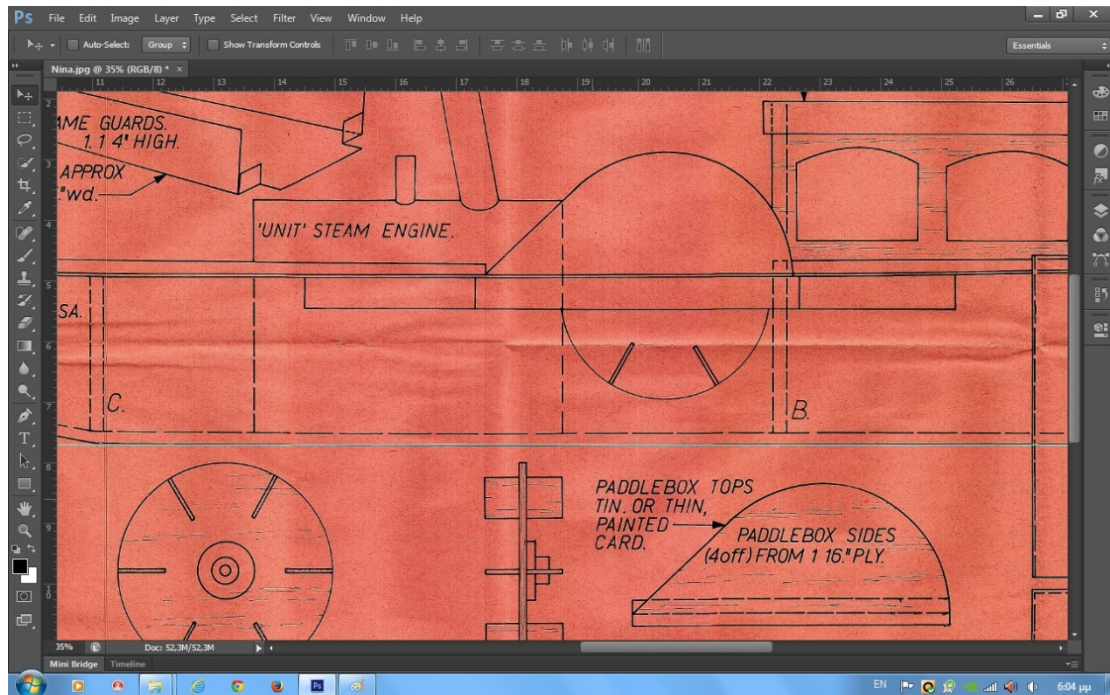


Nina Before.



Step 2.

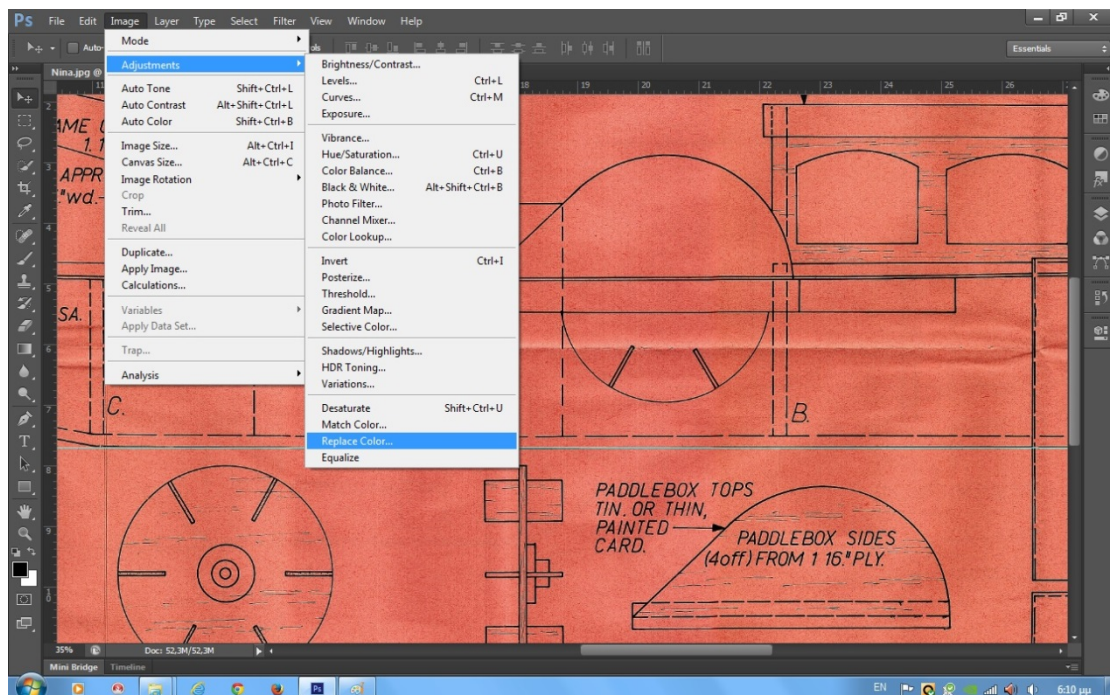
Are aligned and magnified the plan on the screen photo 2.



Step 3.

Selected commands from the program.

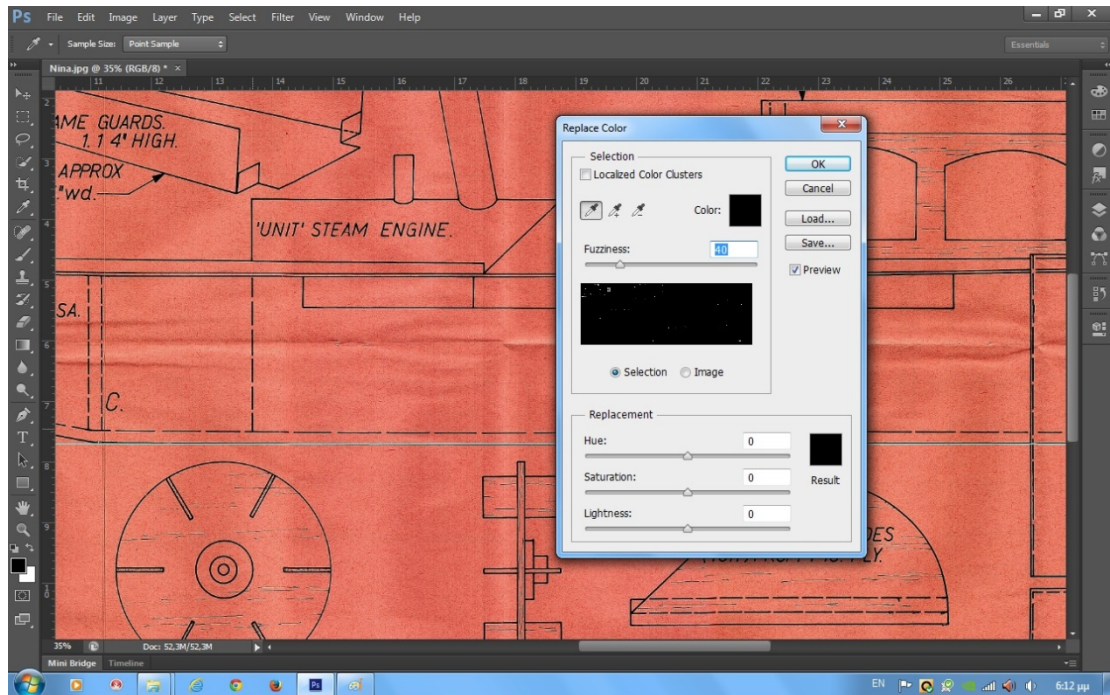
Image – Adjustments – Replace Color photo 3.





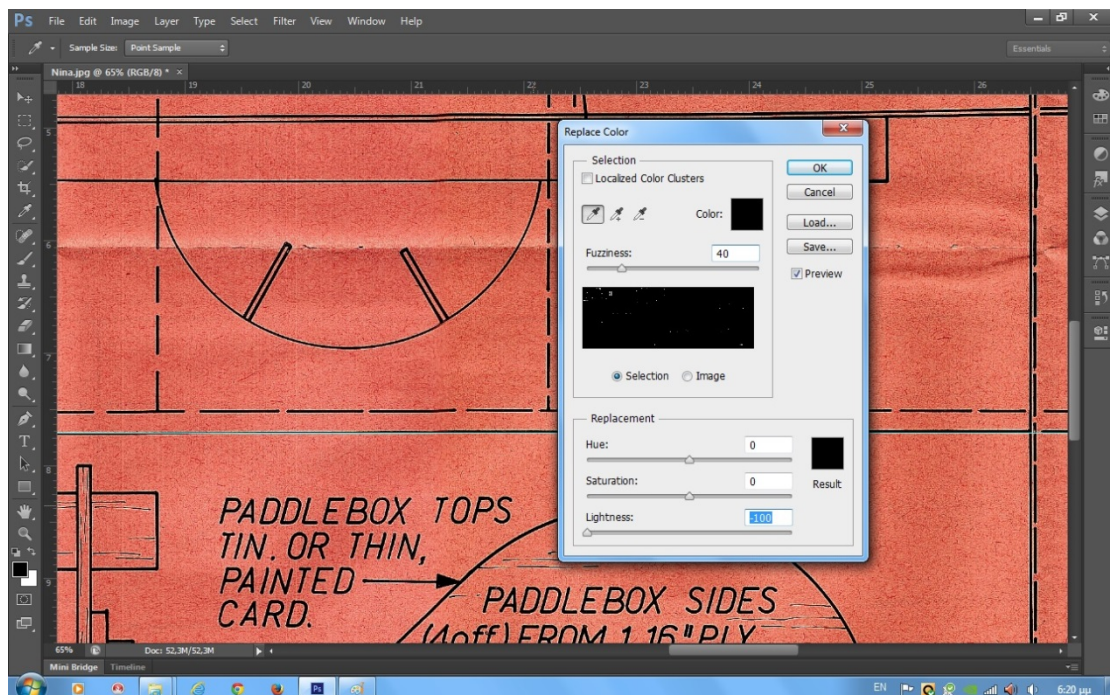
Step 4.

Selected commands and press ok photo 4.



Step 5.

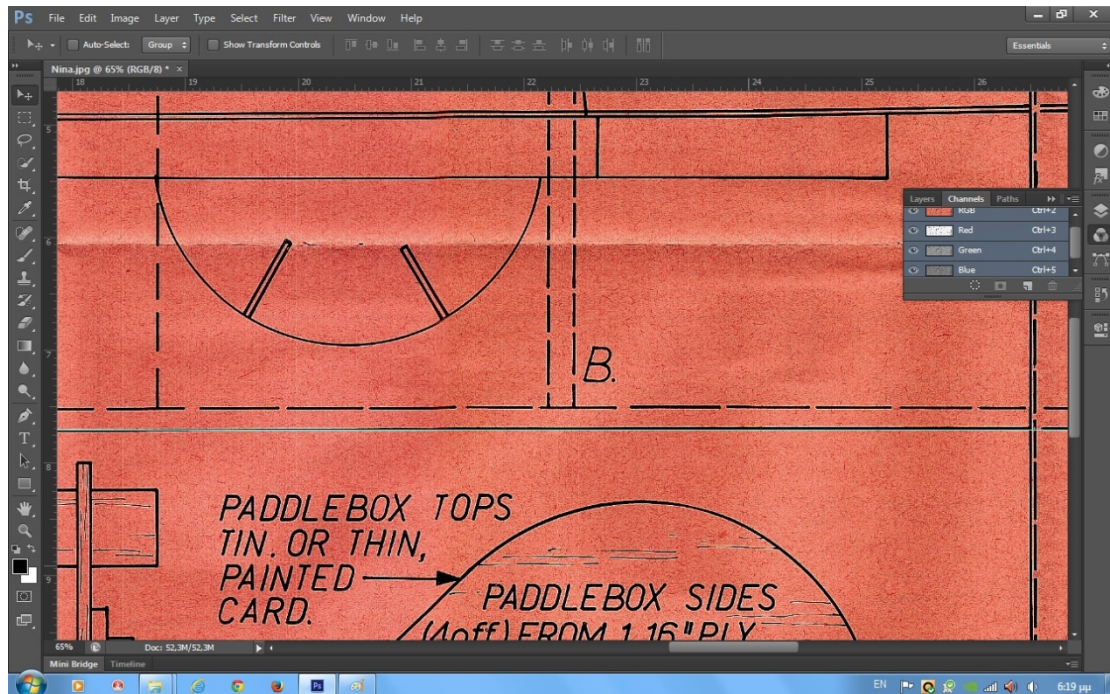
Selects and tinted black lines on the plan.



Step 6.

Selects program command, channels.

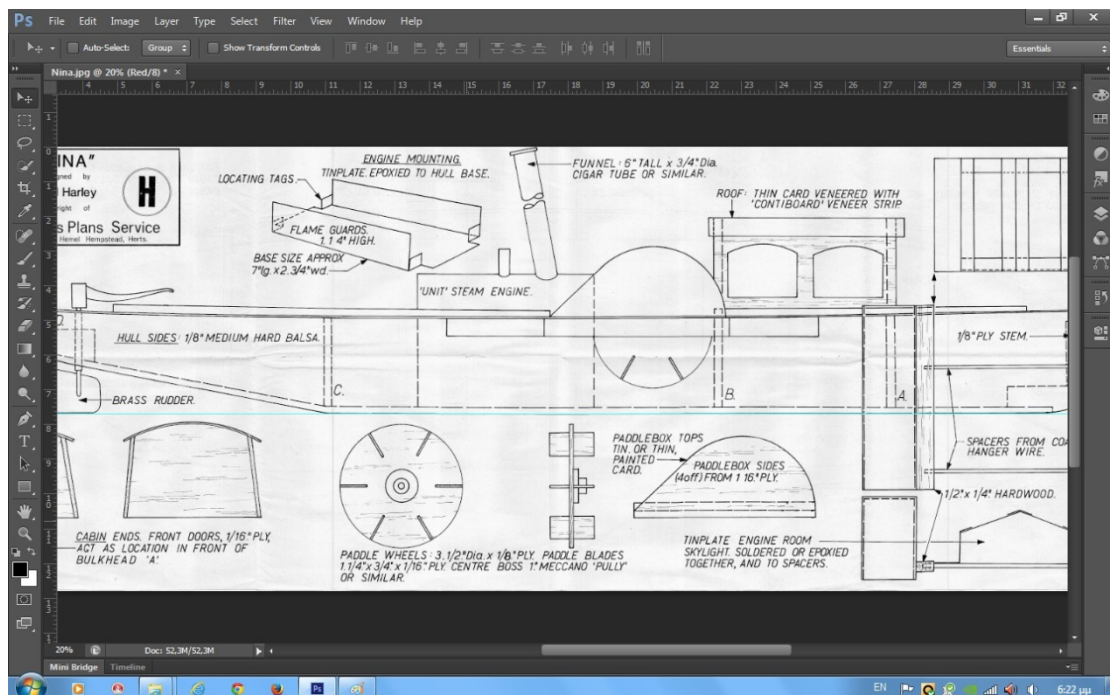
Right Center of our screens photo 6.



Step 7.

From the open window right of the screen, Select the red photo 7.

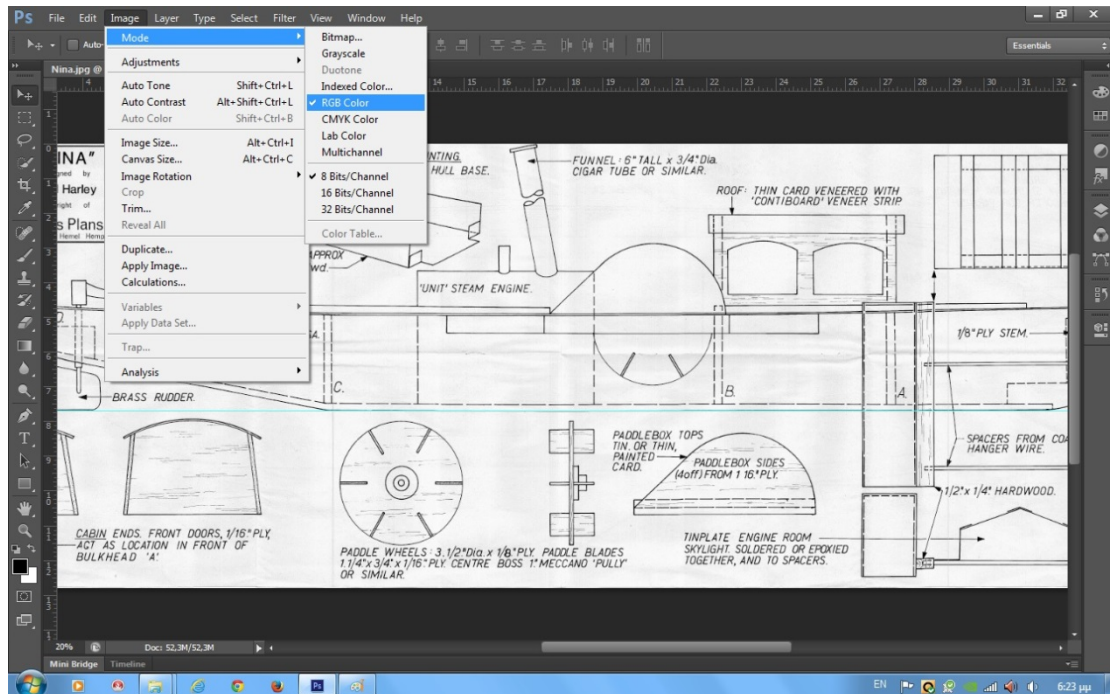
Not RGB – Green – Blue.





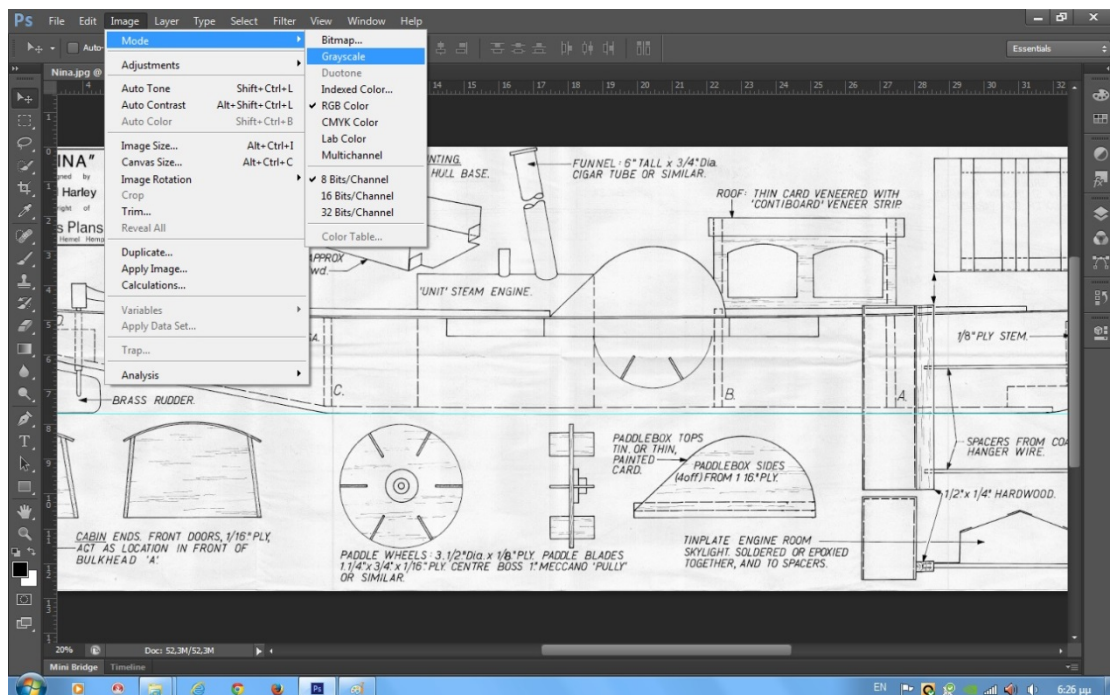
## Step 8.

The plan is white but in the condition RGB photo 8.



## Step 9.

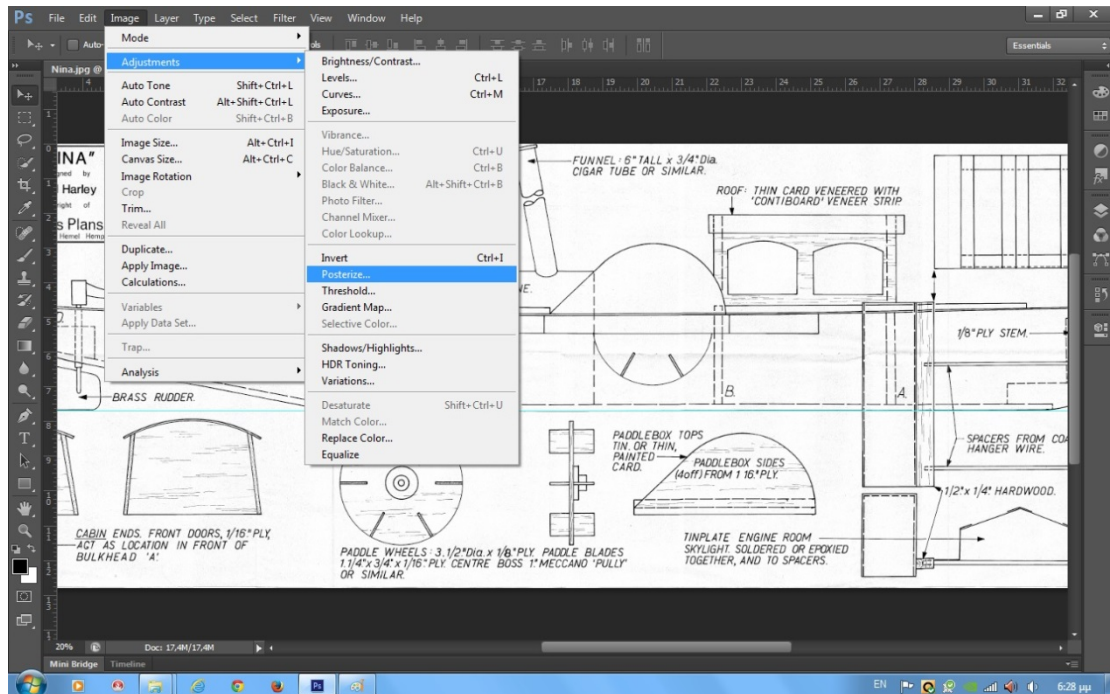
Converts plan (picture) in gray photo 9.



Step 10.

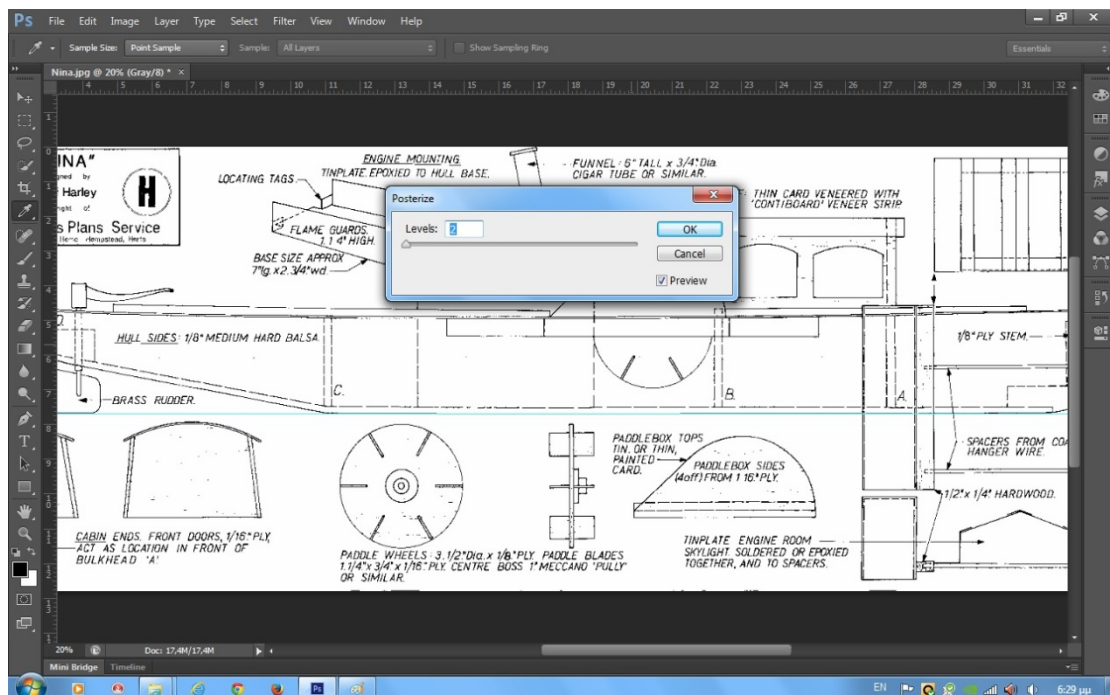
Selects command.

Image – Adjustments – Posterize photo 10.



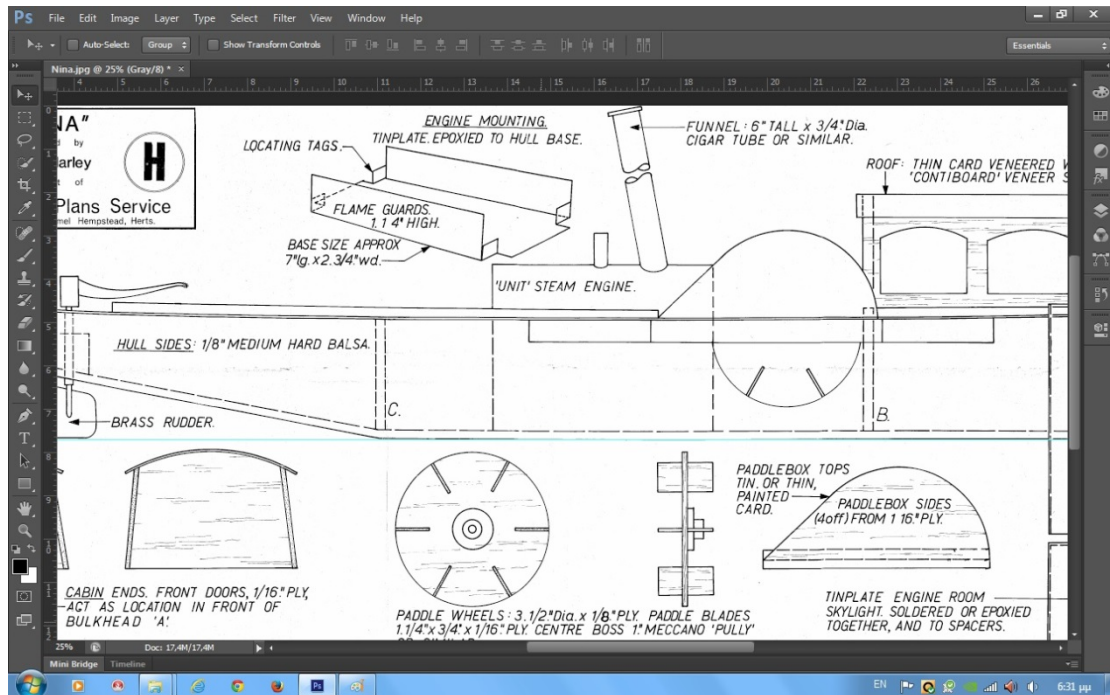
Step 11.

Choose a level posterization photo 11.



Step 12.

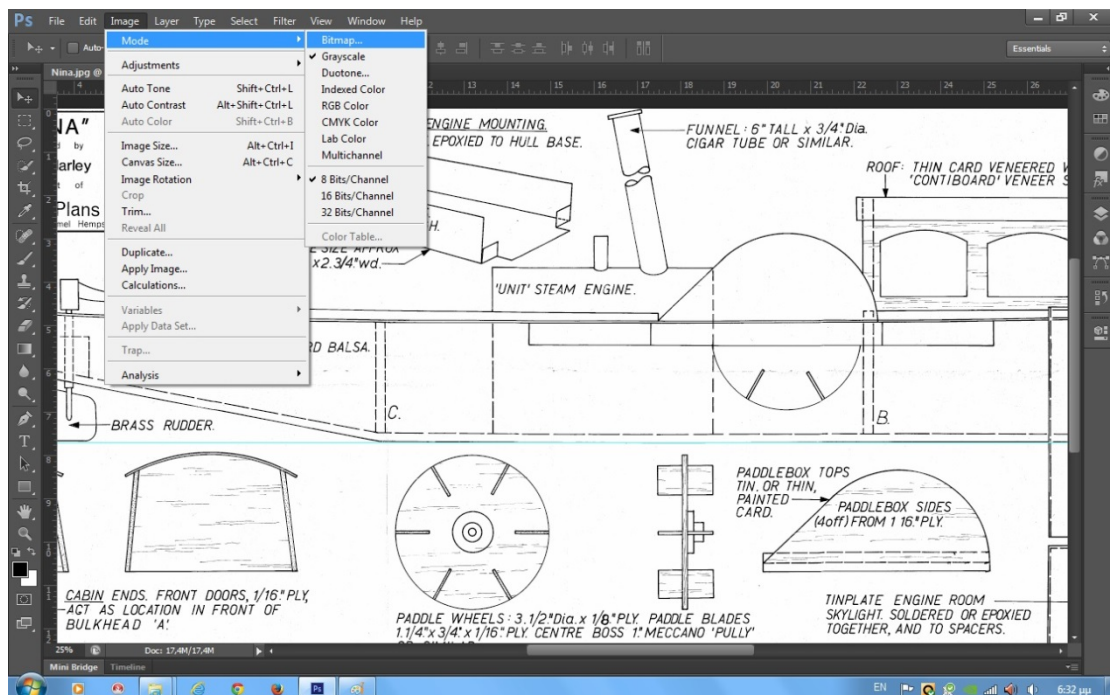
Press OK command, and the new image we have in our screen photo 12.



Step 13.

Selects command.

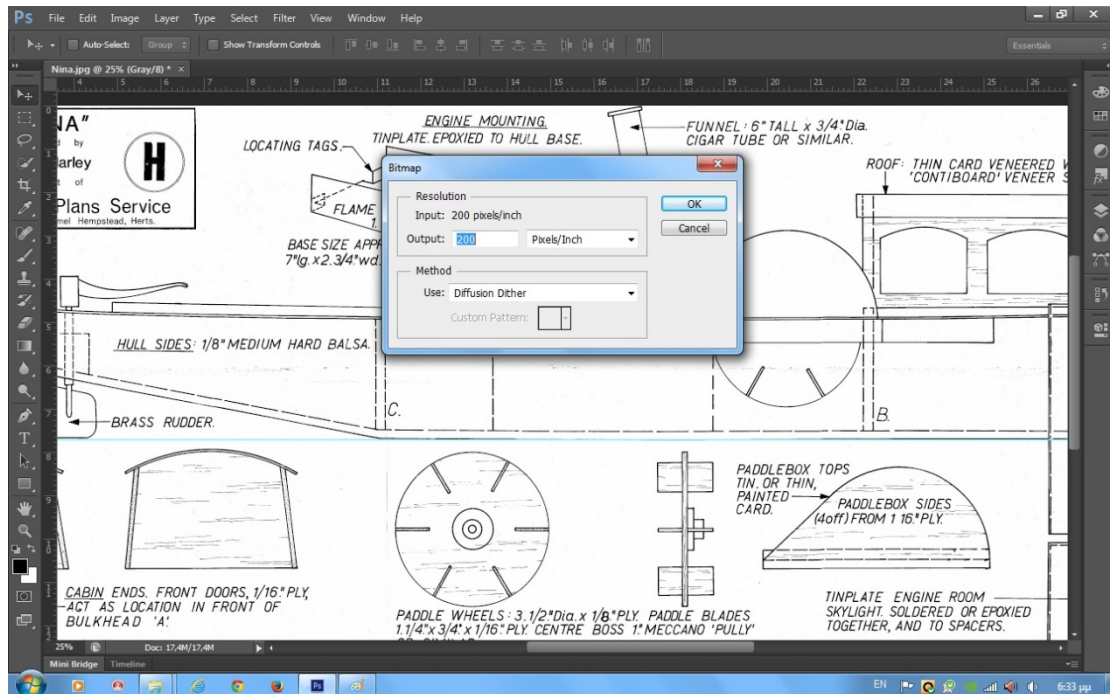
Image – Mode – Bitmap photo 13.





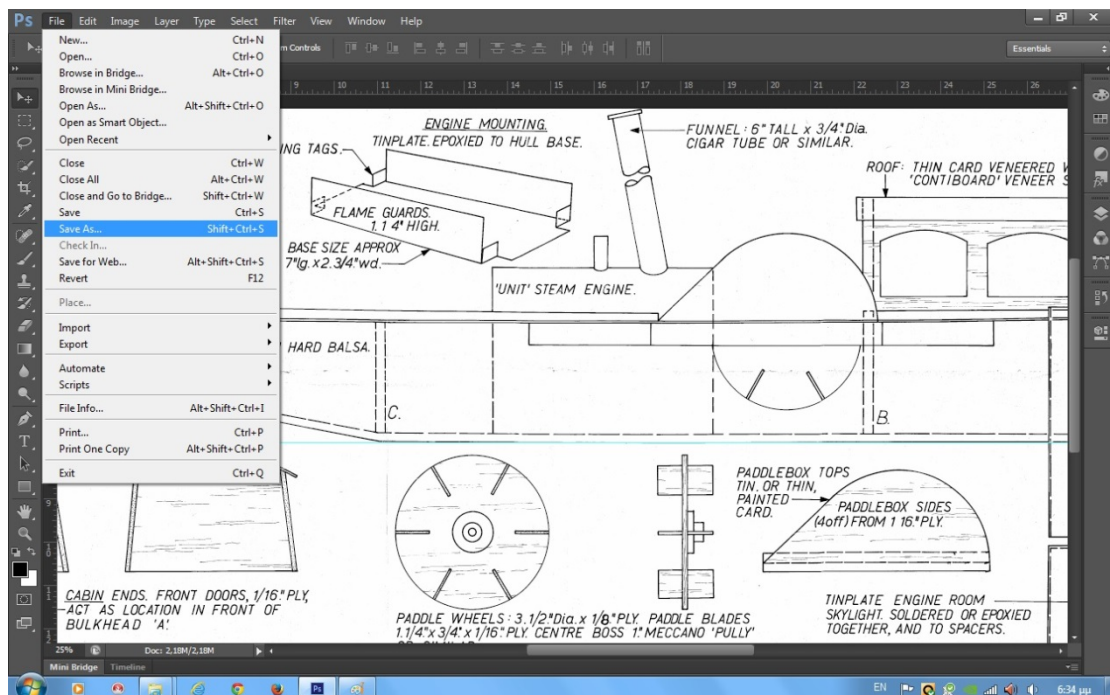
Step 14.

Selects image size in pixels photo 14.



Step 15.

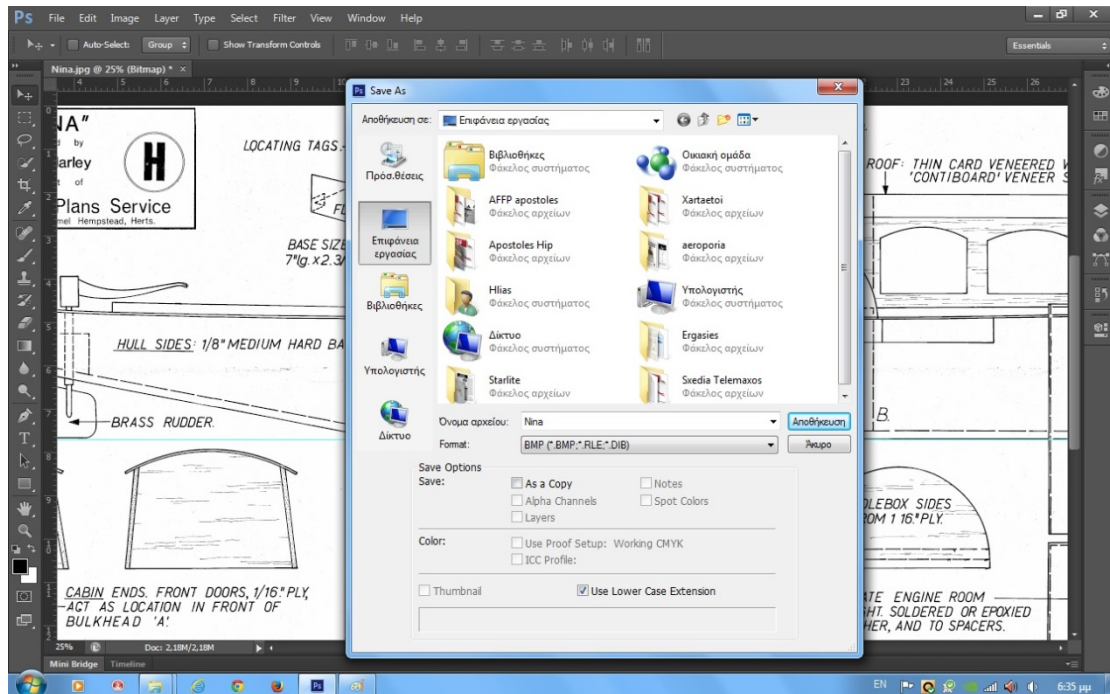
Save the plan as photo 15.





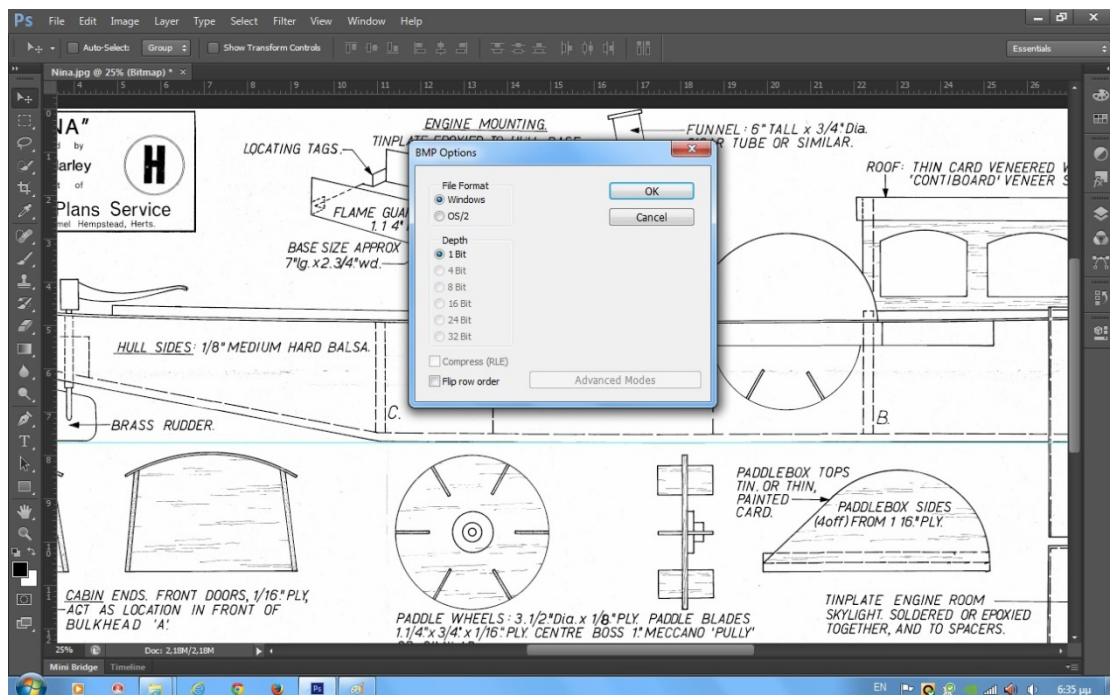
Step 16.

Bitmap file with name Nina After step 1 photo 16.



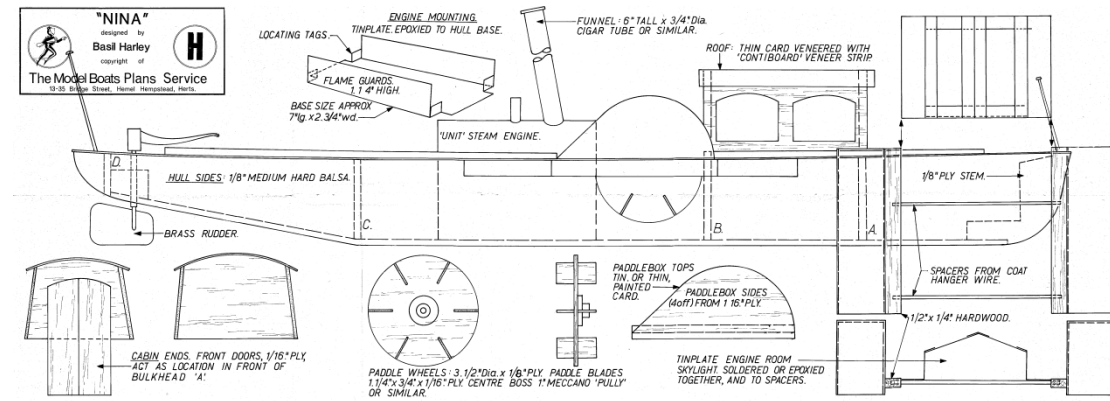
Step 17.

Bitmap file with name Nina After step 1 photo 17.



Final result.

Plan Nina After Color of in Bitmap file.



Elijah Efthimiopoylos Greece.